



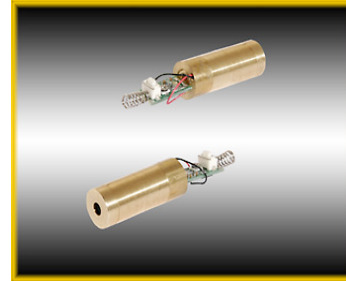
Beam of Light Technologies, Inc.  
 Portland, Oregon, US  
 503-867-1617 603-386-6644 Fax  
 John@Z-Bolt.com  
 Z-Bolt is registered trademark of Beam of Light Technologies, Inc. All Rights Reserved

# Diode Assembly Specifications

## GENERAL:

### Z-Bolt 12 mm Green Laser Dot Module

<b>Part Number</b>	<b>DPSS-5B-SP</b>
Color	Green
Units per Sale Package	5 pieces
Output Type [Dot / Line]	Dot



## LASER DIODE:

Wavelength	532nm
Output Power	Z-Bolt Certified 4.0 ~ 5.0mW
FDA Class / ANSI Class	Class IIIa / 3R
Factory Power Report	Included
MTTF	>5000hr
Beam Mode	TEM <sub>00</sub>
Beam Diameter at Aperture	1.5 mm
Beam Divergence	<1.2 mrad
Beam Alignment	N/A
IR Filter	Yes

## LASER PACKAGE:

Housing / Case Material	Brass
Circuit Board Exposure	No
Circuit Type	APC
Switch Type	None
Operation Mode	CW Mode

## POWER:

Input Voltage	3V DC
Electrical Connections	Power Spring
Circuit Polarity	Case Positive
Operating Current	<300mA

## DIMENSIONS & WEIGHT:

Length Overall (excluding leads / spring)	47.3mm +/-1mm
Outside Diameter	12mm +/-1mm
Diode Case Length	31.3mm +/-1mm (without pcb)
Weight Overall	

## ENVIRONMENT

Operating Temperature	15C° ~ 35C°
Warm Up Time	< 3 sec

## DIAGRAM

