



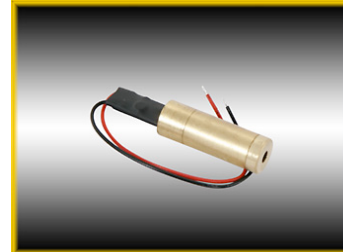
Beam of Light Technologies, Inc.  
 Portland, Oregon, US  
 503-867-1617 603-386-6644 Fax  
 John@Z-Bolt.com  
 Z-Bolt is registered trademark of Beam of Light Technologies, Inc. All Rights Reserved

# Diode Assembly Specifications

**GENERAL:**

**Z-Bolt 12 mm Green Laser Dot Module**

|                          |                |
|--------------------------|----------------|
| <b>Part Number</b>       | <b>DPSS-5B</b> |
| Color                    | Green          |
| Units per Sale Package   | 5 pieces       |
| Output Type [Dot / Line] | Dot            |



**LASER DIODE:**

|                           |                              |
|---------------------------|------------------------------|
| Wavelength                | 532nm                        |
| Output Power              | Z-Bolt Certified 4.0 ~ 5.0mW |
| FDA Class / ANSI Class    | Class IIIa / 3R              |
| Factory Power Report      | Included                     |
| MTTF                      | >5000hr                      |
| Beam Mode                 | TEM <sub>00</sub>            |
| Beam Diameter at Aperture | 1.5 mm                       |
| Beam Divergence           | <1.2 mrad                    |
| Beam Alignment            | N/A                          |
| IR Filter                 | Yes                          |

**LASER PACKAGE:**

|                         |         |
|-------------------------|---------|
| Housing / Case Material | Brass   |
| Circuit Board Exposure  | No      |
| Circuit Type            | APC     |
| Switch Type             | None    |
| Operation Mode          | CW Mode |

**POWER:**

|                        |               |
|------------------------|---------------|
| Input Voltage          | 3V DC         |
| Electrical Connections | 100mm leads   |
| Circuit Polarity       | Case Positive |
| Operating Current      | <300mA        |

**DIMENSIONS & WEIGHT:**

|   |                             |
|---|-----------------------------|
| Length Overall (excluding leads / spring) | 47.3mm +/-1mm               |
| Outside Diameter                          | 12mm +/-1mm                 |
| Diode Case Length                         | 31.3mm +/-1mm (without pcb) |
| Weight Overall                            |                             |

**ENVIRONMENT**

|                       |             |
|-----------------------|-------------|
| Operating Temperature | 15C° ~ 35C° |
| Warm Up Time          | < 3 sec     |

**DIAGRAM**

